

and desire, unlike the Moon, whose qualities include maternal love.

In aligning itself between the Sun and the earth on June 6th, Venus will temporarily dim a large portion of the light of the Sun. Symbolically drawing our attention inward, she will assist us as individuals and as a collective to consciously reconsider what we truly value and if the choices we are making in all areas of

our life are truly aligned with them.

Questions that may be helpful to ask, in the weeks leading up to this transit include: what do I enjoy in myself, in my life, in general? What do I find beautiful in myself? What do I value? What do I find desirable? Notice the music, clothes, environments and people you choose to be surrounded with in your life – do they reverberate with

the answers to your questions? What creative choices might you wish to now make that may feel more loving for you?

As we all continue to co-create with the powerful transits of 2012, I leave you with a gentle reminder from the work channelled by Pat Rodegast: There is no greater wisdom than your own heart.

1 This second part of a two part transit (part 1 took place on June 8th 2004) also coincides with the almost exact square in the sky, between the planets Pluto and Uranus. See the previous edition of Network Ireland for more information on this transit. I will also be addressing it in future editions.

2 If you would like to know more about Venus in your sign feel free to have a look at the page on Venus in the Signs in the section on Media and Astrology Articles on my website [www.astrologypsychological.com](http://www.astrologypsychological.com)

# ARCHETYPAL INTEGRATION IN THE TAROT

WITH CHRISTINE DANIELLE VIERLING

## EXPLORING THE MAGICIAN, LOVERS, TEMPERANCE

HOW CAN WE CREATE A MAGICAL LIFE FULL OF LOVE AND HARMONY? HOW CAN WE FULFIL THE HUMAN QUEST TO FEEL PASSION AND JOY FOR OUR EXISTENCE? ACKNOWLEDGEMENT OF THE JUNGIAN ARCHETYPES THAT REPRESENT MAN AND WOMAN ALLOW US TO RECOGNIZE THAT IT IS NOT JUST THE BATTLE OF THE SEXES THAT MUST BE UNDERSTOOD BUT MORE IMPORTANTLY THE INNER CONFLICT BETWEEN OUR OWN INNER MALE AND FEMALE THAT CAN IMPACT ALL OF OUR EXTERNAL RELATIONSHIPS. THE TAROT SERVES AS AN INSIGHTFUL TOOL TO SHOW US HOW WE CAN INTEGRATE THOSE ARCHETYPAL POLARITIES.

Christine Danielle Vierling is a certified Polarity Therapy practitioner (integrated intuitive energy healer), Synergy Yoga/Dance teacher, Intuitive Development Expert and Counsel based in Dublin, Ireland serving clients and students world-wide since 1995. For more information visit [www.cdvierling.com](http://www.cdvierling.com)

Naturally, our urge to merge as man and woman is biological at base, but on a higher level is our soul desire to become One with all that is in our Great Universe. Three Major Arcana (The Magician, The Lovers, & Temperance) in the Tarot hold key truths that show us how we can integrate our own inner Animus/yang and Anima/yin.

The Magician is an archetypal representation of the Divine Source (a.k.a. God, Great Spirit). He is a true master of consciousness with ready access to all the universal tools of creation: Fire and Air (male energies) in conjunction with Earth & Water (female energies).

The Magician has one hand reaching to Heaven and the other reaching towards Earth which demonstrates that magic is simply the ability to apply a spiritual higher vision (yang) to an earthly reality (yin). The basic elemental tools (Wand, Sword, Cup, & Pentacle) that are set out before the Magician represent all that we need to create a magical reality. The Magician's Wand is an essential tool of creativity that allows us to consciously direct our Fire energy towards the actualization of our desires.

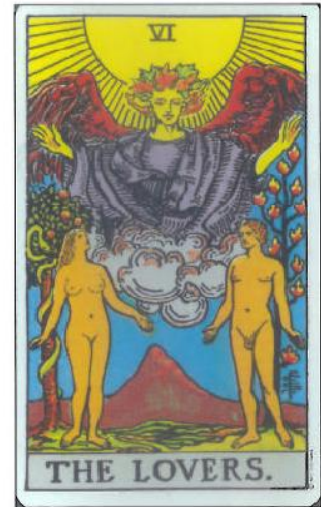
His Sword (Air) signifies the sharp clarity of mind that can point the way towards inner truth, justice, and peace. The Chalice or Cup holds the Water of Life that allows us to flow with intuition and emotional intelligence towards all that may fulfil us at heart. Last but not least, we need the practicality of Earth to manifest what we desire which in Tarot is pictured as a Pentacle or five-pointed star within a circle, the ancient symbol of spirit and body merged as one. For example, when we view money as spiritual energy supporting us or the body as a Tantric temple supporting us in our spiritual journey on Earth, then we are practicing the act of merging our human needs (yin) with our spiritual longings (yang).





This merging of our yin and yang can be further understood with a look at the archetypal lovers. The Lovers card in Tarot can cause much confusion. Many automatically assume that it means love will be crossing their path (the Tarot's Two of Cups more aptly signifies true love), when really the card is more about balancing the male and female energies in oneself than about experiencing love with another.

No matter what sex we are, we must all balance our inner male energy/yang with our female energy/yin to attract and sustain the loving relationships we wish for. The corollary is if we are unbalanced within ourselves, we will attract unstable relationships. The lover we choose is often a mirror of that aspect, both what in shadow and light, of ourselves that we most need to merge with at a given time.



While the Lovers in Tarot calls us to integrate the archetypes within our own selves, the Temperance card represents true harmony in our external relationships. Here an angel holds the ever-flowing cups of love that catch the light of heaven, Water and Fire then come into perfect alchemy. So then we temper the rush of our watery emotions so they cannot put out our fiery drive to create and vice versa we temper our passionate fire so that it cannot evaporate our deep water. Temperance shows us that we need both the elements of water and fire equally to stay in love or connected in relationship.



The balance between light and dark, male and female, fire and water is essential to becoming whole. One cannot exist without the other. There needs to be equal energetic exchange between the two elements in a human relationship. We need water/yin/female/depth to support and nurture our emotional well-being (given we humans are 70%+ water just as Mother Earth is 70%+ water). Equally we need fire/yang/male/light to stimulate the creative growth, passion, adventure, fun, and strength of our relationships. No doubt we humans could not exist on Earth without our Sun.

So when we really get our Animus and Anima to jive together in the dance of life, then we feel the strength of Source energy running through our veins, and the water of life allowing us to flow with all that fulfils our souls.

**SOUL INSPIRATION & SUPPORT RETREAT**  
**DUNDERRY PARK, NAVAN, CO MEATH**  
**3rd - 5th AUGUST 2012**



Dedicated **HEART** space in beautiful **NATURE** where seasoned facilitators of meditation, yoga, dance, drumming, healing, creative expression, soul truth discovery, shamanistic, and spiritual practices will support and inspire your **SOUL** to resonate with all that brings **STRENGTH** to **EVOLVE** as needed.

295 Eur inclusive of tuition & full room & board, Friday 3rd - Sunday 5th Aug

**SPECIAL NETWORK RATE** 245 Eur applies when paid in full by 30th April

For Bookings & Details Contact: Christine Danielle Vierling  
 085-703-4984 or daniellevierling@gmail.com

**ENERGY HEALING**  
*for everyone*



A PRACTICAL GUIDE TO SELF HEALING

**Did you know that you already have the power to heal yourself?**

In this ground-breaking new book, psychotherapist and shamanic energy healer Abby Wynne MSc will show you how to connect to a natural source of healing energy that we all have access to. Abby includes practical exercises and techniques to help you feel better and empower you for life.

Available as an e-book from [www.abby-wynne.com](http://www.abby-wynne.com)